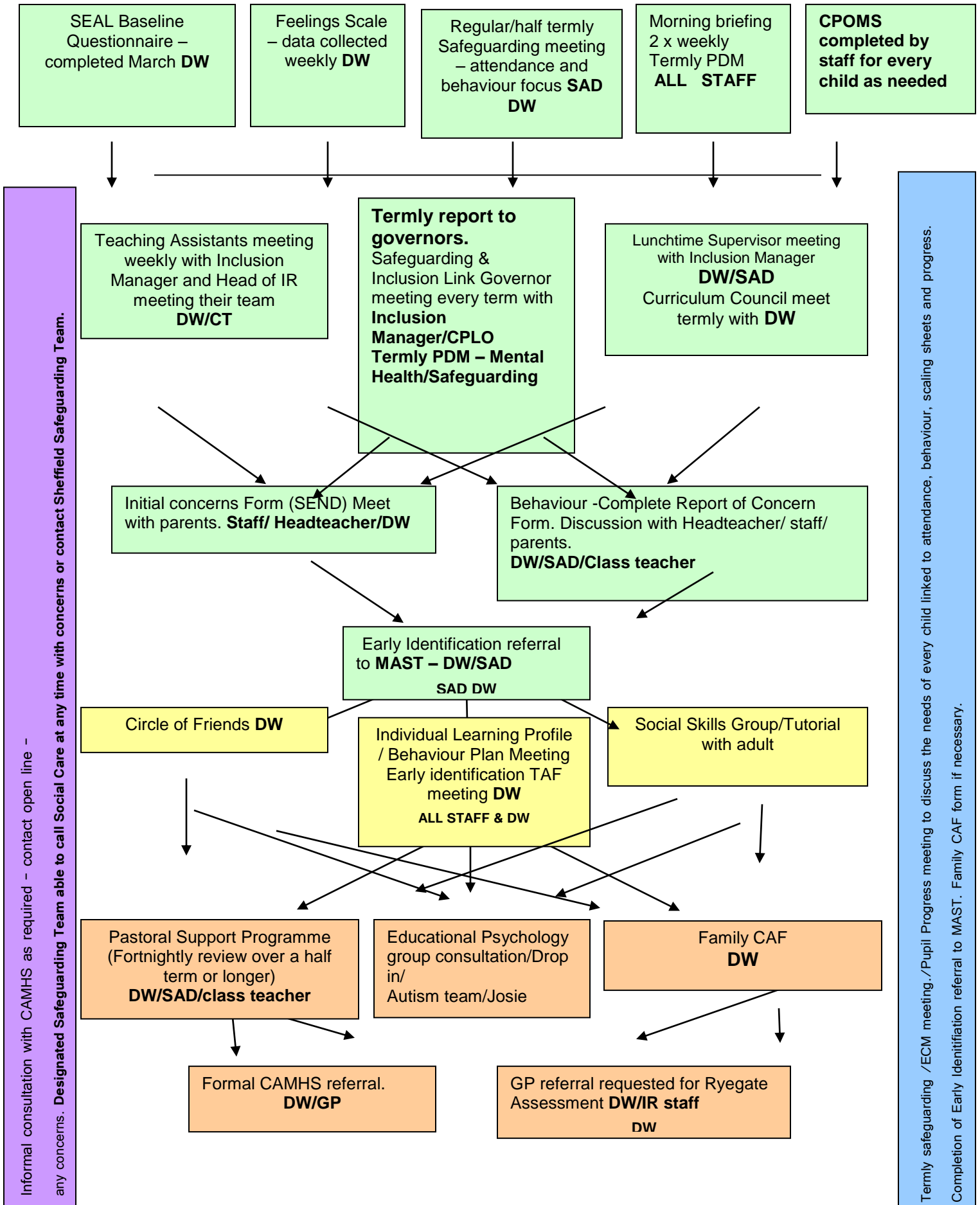
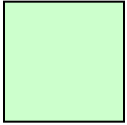


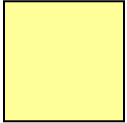
## Nook Lane Junior School Safeguarding/Emotional Well-Being Flowchart



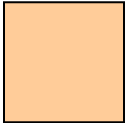
## Additional notes



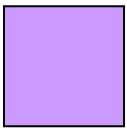
**Wave 1 interventions**



**Wave 2 interventions**

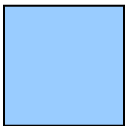


**Wave 3 interventions**



**Support is available to class teachers at any time**

CAMHs Consultation Team is available for all teachers to access support and advice regarding children who are a concern.



**Termly Safeguarding meeting**

Attended by SENCO, DSL and class teacher.

All children are evaluated against the ECM outcomes to identify individual needs. This process helps the school decide whether a Family CAF form needs to be completed or a referral to the Early Identification panel.

### **The Family CAF form allows school to**

- Promote earlier intervention once additional needs have been observed.
- Help establish an understanding of a child/young person's needs based on a common language.
- Determine, what, if any, additional support may be required.
- With the consent of the family, share information with other practitioners.
- Reduce the number and duration of assessments a child may undergo.