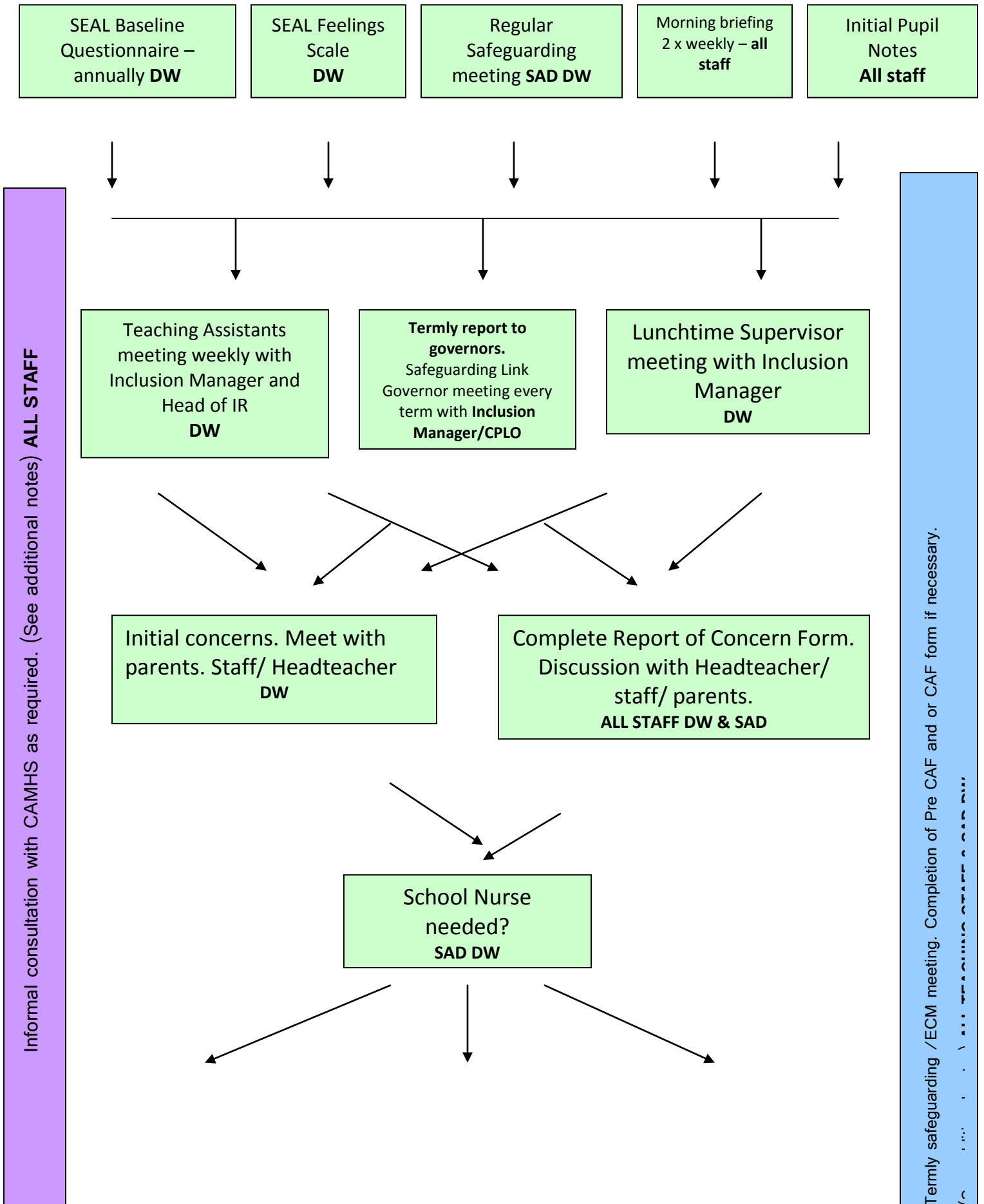
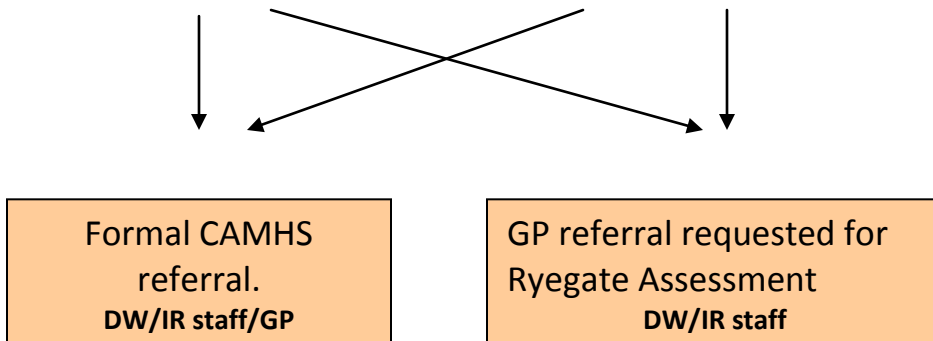
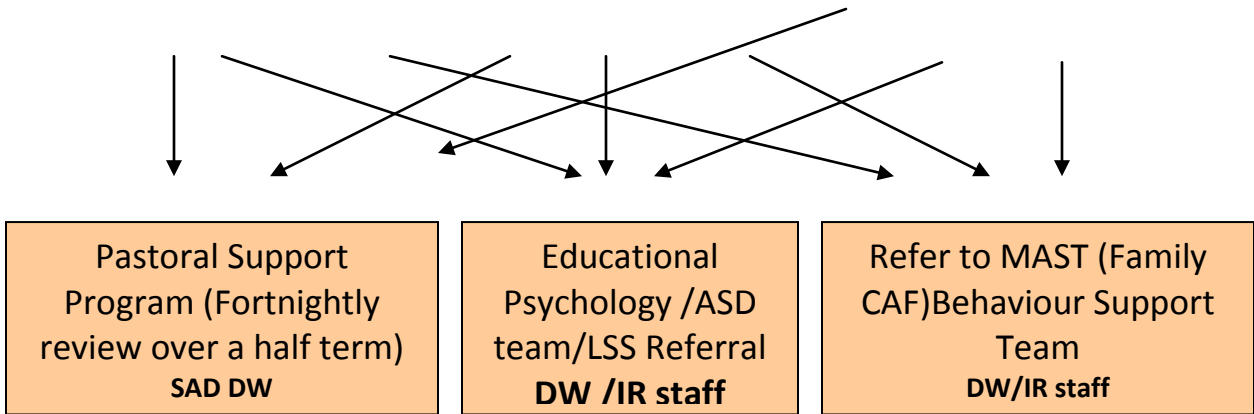
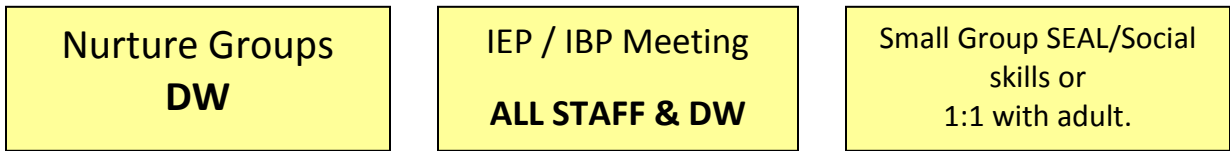
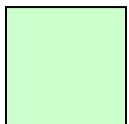


Nook Lane Junior School Safeguarding Flowchart.

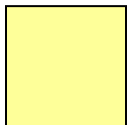




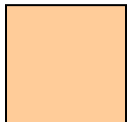
Additional notes



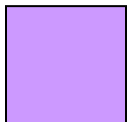
Wave 1 interventions



Wave 2 interventions

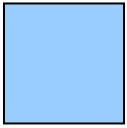


Wave 3 interventions



Support is available to class teachers at any time

CAMHs Consultation Team is available for all teachers to access support and advice regarding children who are a concern.



Termly Safeguarding meeting

Attended by SENCO, CPLT and class teacher.

All children are evaluated against the ECM outcomes to identify individual needs. This process results in all children having a PreCAF completed and helps the school decide whether a Family CAF form needs to be completed.

The Family CAF form allows school to

- Promote earlier intervention once additional needs have been observed.
- Help establish an understanding of a child/young person's needs based on a common language.
- Determine, what, if any, additional support may be required.
- With the consent of the family, share information with other practitioners.
- Reduce the number and duration of assessments a child may undergo.