

Dear School Swimming Contact,

Here are your 2016/2017 final Swimming results and the subsequent analysis of them so you can share the information with your colleagues. The service average contains the results from all year groups of all Infant, Junior, Primary and Special schools that swam with the service.

### Swimming Service average compared to 2015/2016

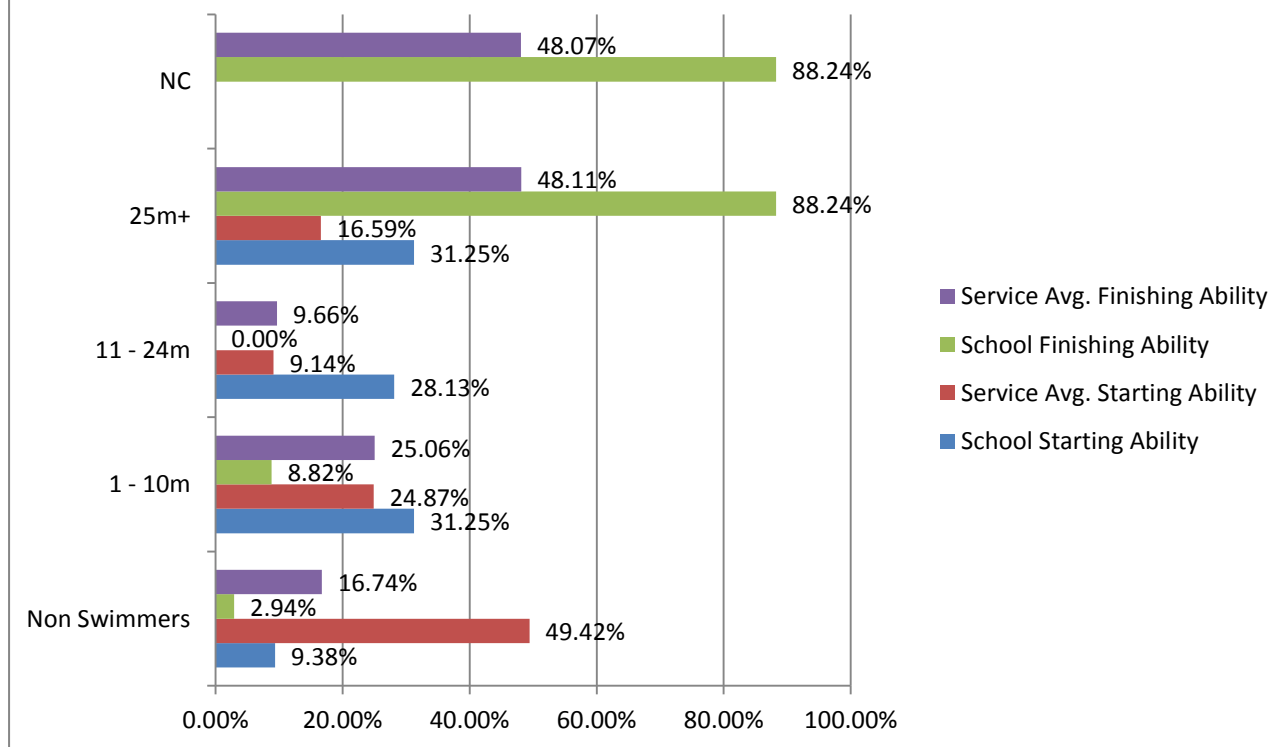
	Starting ability		Finishing Ability	
	2015/2016*	2016/2017	2015/2016**	2016/2017
<b>Non Swimmer</b>	48.52%	49.42%	13.61%	16.74%
<b>1 – 10m</b>	25.07%	24.87%	25.77%	25.06%
<b>11 – 24m</b>	9.84%	9.14%	8.68%	9.66%
<b>25m+</b>	15.66%	16.59%	49.35%	48.11%
<b>National Curriculum</b>			48.04%	48.07%

\*0.91% absent, \*\*2.59% absent

### Your school results

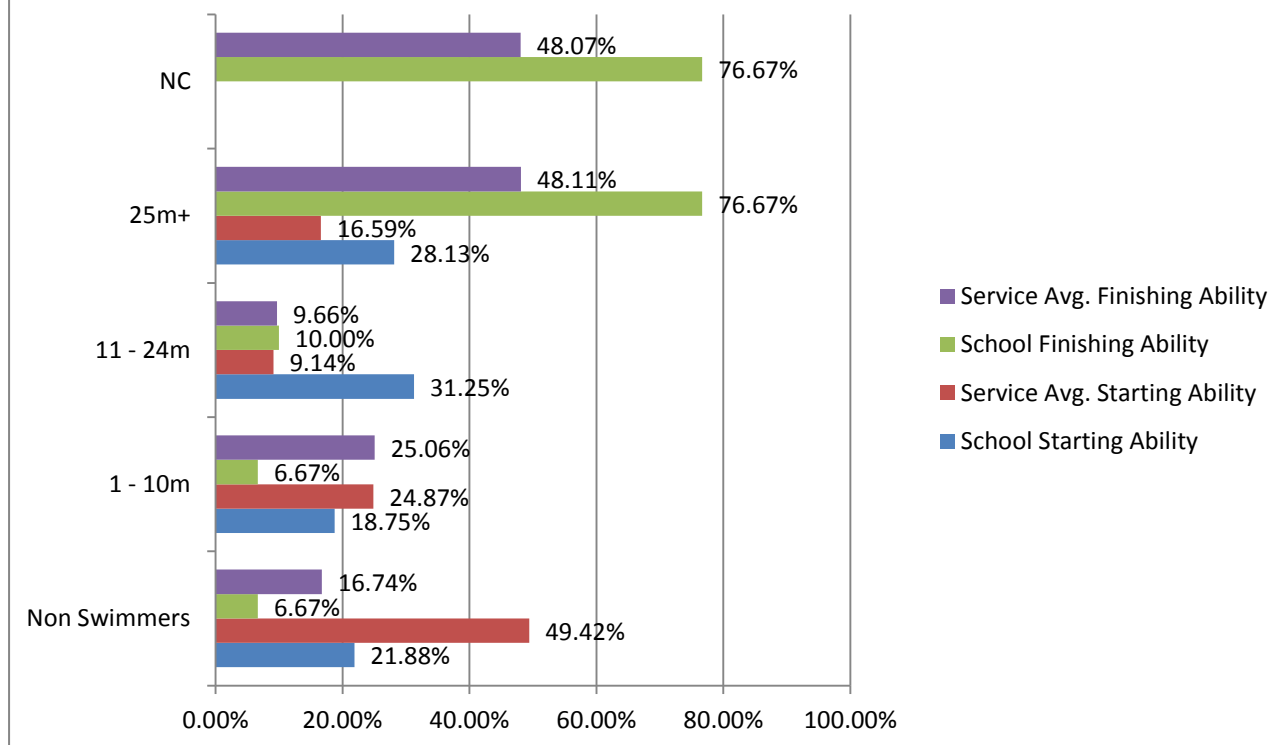
18 Weeks	Nook Lane Junior		Fri 1.30pm	Y4
	School Starting Ability	Service Avg. Starting Ability	School Finishing Ability	Service Avg. Finishing Ability
<b>Total in class</b>	32	28.07	34	27.48
<b>No. not assessed</b>	0		0	
<b>Non Swimmers</b>	9.38%	49.42%	2.94%	16.74%
<b>1 - 10m</b>	31.25%	24.87%	8.82%	25.06%
<b>11 - 24m</b>	28.13%	9.14%	0.00%	9.66%
<b>25m+</b>	31.25%	16.59%	88.24%	48.11%
<b>NC</b>			88.24%	48.07%

## Nook Lane Junior: Fri 1.30pm: Y4: 18 Weeks



18 Weeks	Nook Lane Junior		Fri 2.10pm	Y4
	School Starting Ability	Service Avg. Starting Ability	School Finishing Ability	Service Avg. Finishing Ability
<b>Total in class</b>	32	28.07	30	27.48
<b>No. not assessed</b>	0		0	
<b>Non Swimmers</b>	21.88%	49.42%	6.67%	16.74%
<b>1 - 10m</b>	18.75%	24.87%	6.67%	25.06%
<b>11 - 24m</b>	31.25%	9.14%	10.00%	9.66%
<b>25m+</b>	28.13%	16.59%	76.67%	48.11%
<b>NC</b>			76.67%	48.07%

## Nook Lane Junior: Fri 2.10pm: Y4: 18 Weeks



Please see the copy of the register that was given to your member of staff at the last lesson for pupil level data.

Many thanks, the School Swimming team.